



## 230 TON PORTABLE AIR COOLED CHILLER PACKAGE

Unit Performance / Data



### **General**

CAT Class	718-3070
Manufacturer	Custom Air Products & Services, Inc.
Chiller Model Number	PCHH-227TC-0NN0NN-5E5-0-PG2CEUP
Equipment Insurance Value	\$240,000.00
Filter Requirements	N/A

### **Chiller Dimensions**

Length (Cage)	287.25" (23'-11 1/4")
Length (Base)	292" (24'-4")
Width	101.5" (10')
Height	101.875" (8'-5 7/8")
Unit Weight	20,500 Lbs.

### **Electrical**

Certification	UL/cUL Listed equipment and components
Single Point Power Supply	460V/3PH/60HZ
Connections	2 @ Series 16 Male per conductor
Min. Circuit Ampacity (MCA)	422 (MCA must be used for circuit sizing-includes pump)
Max. Overcurrent Protection (MOCP)	500

### **Evaporator Flow**

Water Volume, Gals.	140
Max Water Side Pressure, PSIG	150
Max Refrigerant Side Pressure, PSIG	235
Min Chilled Water Flow Rate, GPM	180
Max Chilled Water Flow Rate, GPM	800

**For more information contact:**

**Herc Rentals**  
**www.hercrentals.com**  
**1 (888) 658-1718**

*More unit performance data on page 4*

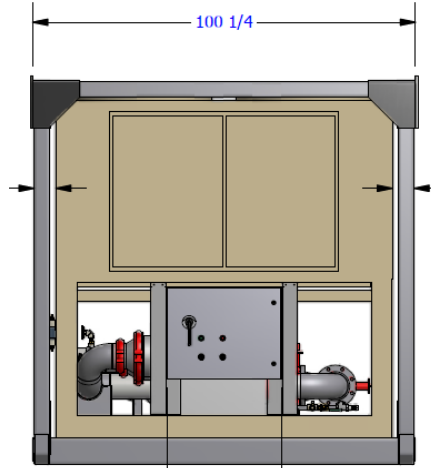


## 230 TON PORTABLE AIR COOLED CHILLER PACKAGE

Unit Drawings / Photos



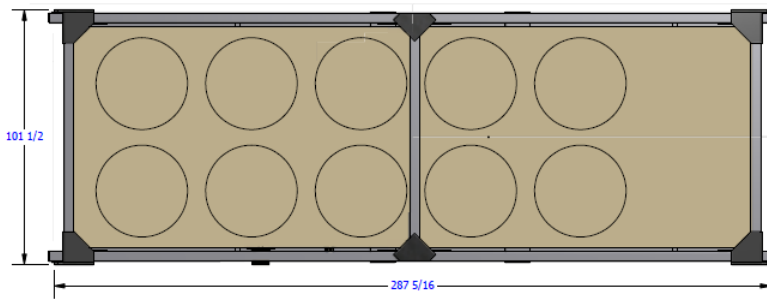
Integrated 600 GPM Pump with Bypass



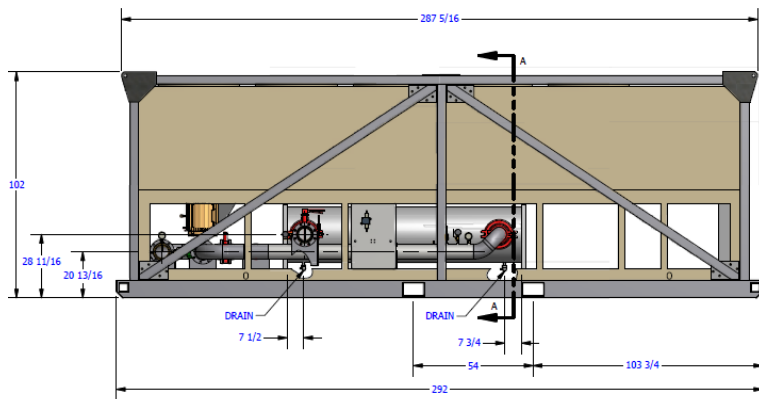
Control and Electrical Panels with Dimensional Data



Control and Electrical Panels



Plan View with Dimensional Data



Lifting/Stacking Structural Skid and Cage with Dimensional Data



4" Chilled Water Connections

For more information contact:

Herc Rentals

[www.hercrentals.com](http://www.hercrentals.com)

1 (888) 658-1718



## 230 TON PORTABLE AIR COOLED CHILLER PACKAGE

### Product Data

#### Chiller Features:

- York YCIV0227PA46VAB air cooled chiller
- VSD Power/Control Panel and VSD for TEAO condenser fan motors
- Direct drive, semi-hermetic, rotary twin-screw type compressors with variable-speed drive for dynamic staging control and energy conservation
- Evaporator-Shell & Tube heat exchanger
- Super quiet design
- High efficiency/performance
- R134A refrigerant
- Freeze protection to -20F with 3/4" foam insulated evaporator, chilled water barrel heaters, external thermostat control for heaters and refrigerant isolation valves (discharge valve)
- Suitable for high ambient operation up to 125°F with high ambient option
- Suitable for low ambient operation down to 0°F with low ambient option
- Dual circuit machine for staging and efficiency
- Louvered condenser coil guards
- Standalone York DDC temperature controls
- U.L. / cU.L. listed to US and Canadian safety standard
- CRN Certified for the following Provinces: Ontario, Quebec, Alberta and BC
- ASHRAE 90.1 compliance
- ARI Standard 550/590 & ANSI/NFPA Standard 70

#### Package Features:

- Phase monitor and phase fail indicator light (red)
- Main power on indicator light (green)
- Master On/Off switch
- One (1) hour compressor crank case heater lock out timer
- Common trouble alarm terminal
- Integrated main power wiring with Cam-Lock electrical connections and associated wiring
- Single point 460V/3PH/60HZ power application power connection for Chiller/Pump package
- Additional differential pressure safety switch for chiller protection
- EnergyGuard condenser coil corrosion protection
- Temperature and pressure gauges (Inlet & Outlet)
- Chiller provided with hydronic isolation and drain valves.
- Hot dip galvanized certified structural lifting/stacking skid and integrated tie-downs
- 4" Dixon Cam-Lock quick connect fitting connections (Inlet & Outlet)
- 4" Butterfly Valve (Inlet & Outlet)
- Chilled water temperature and pressure indication (Inlet & Outlet)
- Integrated 600 GPM @ 100' TDH system pump with bypass for local or remote pump application

#### For more information contact:

**Herc Rentals**

**[www.hercrentals.com](http://www.hercrentals.com)**

**1 (888) 658-1718**



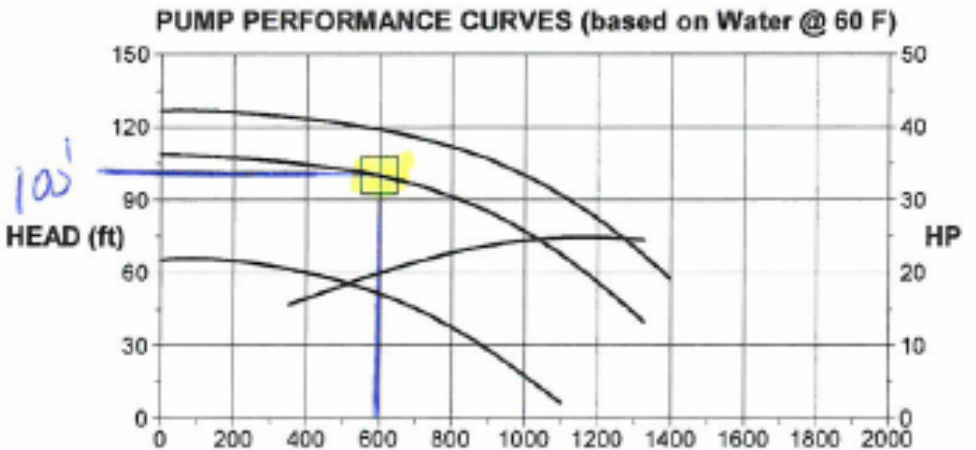
## 230 TON PORTABLE AIR COOLED CHILLER PACKAGE

Unit Performance/Data

MODEL: YCIV0227S/P																						S_IPLV = 12.9		P_IPLV = 14.7			
AIR TEMPERATURE ON - CONDENSER (°F)																											
LCWT (°F)	75			80			85			90			95			100			105			110			115		
	TONS	KW	EER	TONS	KW	EER	TONS	KW	EER	TONS	KW	EER	TONS	KW	EER	TONS	KW	EER	TONS	KW	EER	TONS	KW	EER			
40.0	211.3	180.4	12.9	209.4	194.3	11.9	207.3	209.2	11.0	205.1	224.8	10.2	202.7	241.3	9.4	199.9	259.8	8.7	193.1	269.8	8.1	185.3	277.1	7.6	177.5	283.8	7.1
42.0	218.0	182.0	13.2	216.0	195.7	12.2	213.8	210.5	11.3	211.4	226.2	10.4	208.9	242.7	9.7	206.0	261.3	8.9	198.2	270.0	8.3	190.2	277.4	7.8	182.1	284.2	7.3
44.0	224.9	183.7	13.5	222.7	197.3	12.5	220.4	212.0	11.6	218.0	227.7	10.7	215.3	244.2	9.9	211.9	262.1	9.1	203.5	270.1	8.5	195.2	277.6	8.0	186.9	284.5	7.4
45.0	228.3	184.7	13.6	226.2	198.2	12.6	223.8	212.8	11.7	221.3	228.5	10.8	218.5	245.1	10.0	214.7	262.2	9.2	206.2	270.2	8.6	197.7	277.7	8.1	189.3	284.6	7.5
46.0	231.8	185.7	13.7	229.6	199.1	12.8	227.2	213.7	11.8	224.6	229.3	11.0	221.8	245.9	10.1	217.5	262.2	9.4	208.9	270.2	8.7	200.3	277.7	8.2	191.8	284.7	7.6
48.0	238.9	187.8	14.0	236.7	201.1	13.0	234.2	215.4	12.1	231.4	231.0	11.2	228.5	247.5	10.4	223.2	262.4	9.6	214.4	270.3	9.0	205.6	277.8	8.4	195.3	281.4	7.9
50.0	246.2	190.1	14.3	243.8	203.1	13.3	241.2	217.4	12.4	238.4	232.8	11.5	235.3	249.2	10.6	229.0	262.5	9.8	219.9	270.4	9.2	210.9	277.8	8.6	197.2	274.6	8.1
52.0	253.6	192.7	14.5	251.2	205.4	13.6	248.5	219.5	12.6	245.5	234.9	11.7	242.3	251.2	10.8	234.9	262.7	10.1	225.6	270.4	9.4	216.3	277.8	8.8	199.3	267.5	8.4
55.0	264.9	196.7	14.9	262.4	209.2	13.9	259.5	223.0	13.0	256.4	238.2	12.1	253.1	254.3	11.2	243.9	263.0	10.5	234.3	270.6	9.8	224.6	277.9	9.1	202.2	256.3	8.9

### Pump Performance

Motor 25 HP  
 Motor Type TEFC  
 Configuration Vertical In-Line  
 Variable Speed N/A  
 Gallon Per Min. 600  
 Total Discharge Head 100'



Equipment specifications are based manufactures published data; capacity may vary based upon field conditions

For more information contact:

Herc Rentals

[www.hercrentals.com](http://www.hercrentals.com)

1 (888) 658-1718