



500 TON PORTABLE WATER COOLED CHILLER PACKAGE

Unit Performance / Data



General

CAT-Class	718-3090
Manufacturer	Custom Air Products & Services, Inc.
Unit Model Number	PCHH-500TC-0NN0NN-5E5-0-PG2CEUP
Equipment Insurance Value	\$XXX,XXX.XX
Water Connections	6" Flange

Dimensions

Length	271" (22'-7")
Width	102" (8'-6")
Height	88" (7'-4")
Unit Weight	25,000 Lbs.

Electrical

Certification	UL Listed equipment and components
Single Point Power Supply	460V/3PH/60HZ
Connections	Parallel feed utilizing 2 sets of Cam-Lok
Min. Circuit Ampacity (MCA)	502 (MCA must be used for circuit sizing)
Max. Overcurrent Protection (MOCP)	800
Inrush Amps:	1037
Starter Type:	Star Delta Closed

Evaporator Flow

Water Volume, Gals.	121
Max Water Side Pressure, PSIG	300
Design Chilled Water Flow Rate, GPM	1200
Design EWT (°F)	53.97
Design LWT (°F)	44.00

Condenser Flow

Water Volume, Gals.	124
Max Water Side Pressure, PSIG	150
Design Chilled Water Flow Rate, GPM	1500
Design EWT (°F)	85.00
Design LWT (°F)	94.24

For more information contact:

Herc Rentals

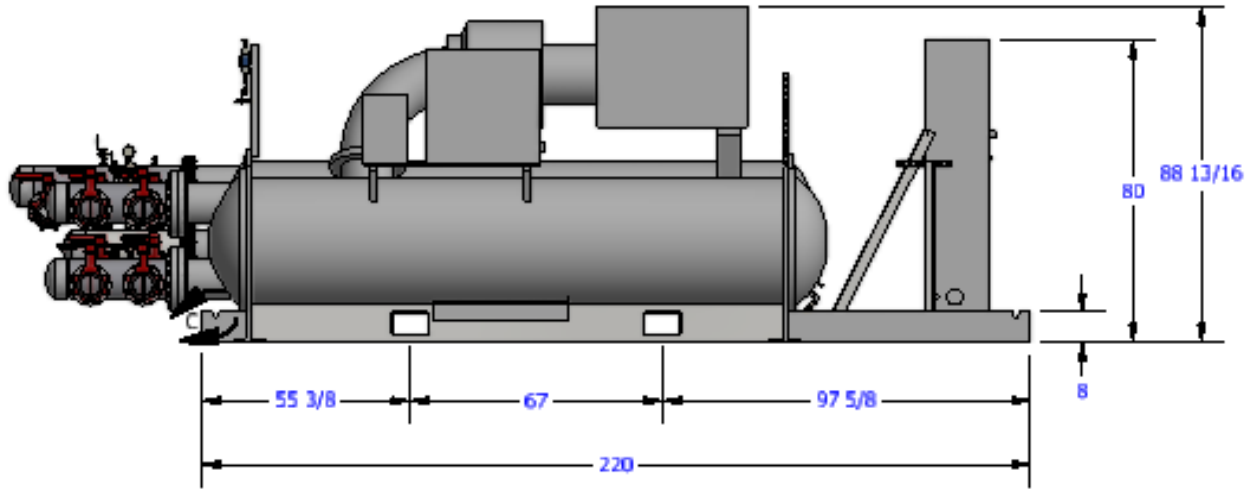
www.hercrentals.com

1 (888) 658-1718

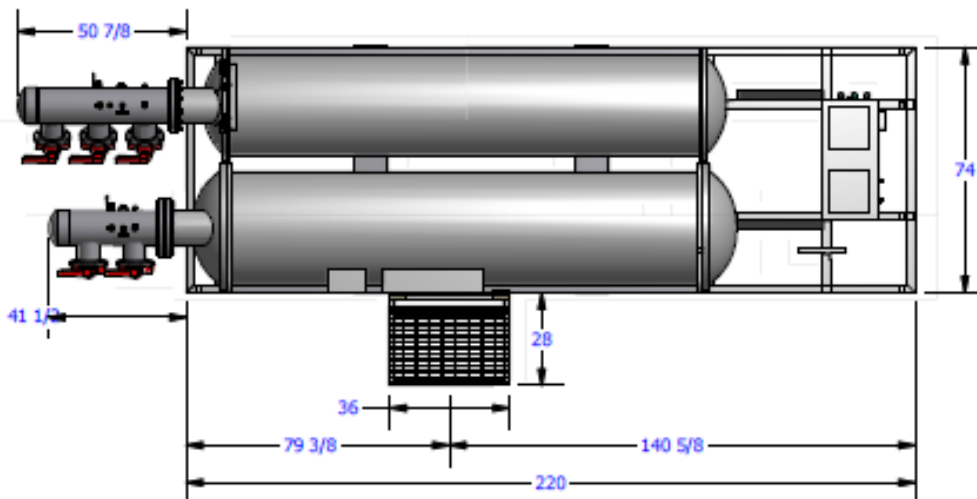


500 TON PORTABLE WATER COOLED CHILLER PACKAGE

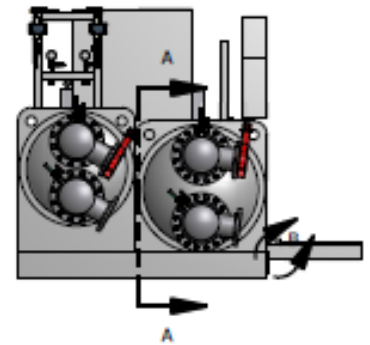
Unit Drawings



Side View



Plan View



Rear View

For more information contact:
Herc Rentals
www.hercrentals.com
1 (888) 658-1718



500 TON PORTABLE WATER COOLED CHILLER PACKAGE

Product Data

Chiller Features:

- JCI – Model# YKERERQ7-CRG water cooled centrifugal chiller with R-134a refrigerant
- Chiller will be supplied for a 460-volt, 3 phase, and 60 Hz application
- One (1) open-drive centrifugal compressor
- Evaporator and condenser heat exchangers are shell and tube construction
- Water-side of evaporator designed for 300-psig DWP with compact water boxes and flanged connections
- Standalone JCI-York DDC temperature controls with OptiView graphic control panel mounted in NEMA 4X enclosure
- Liquid level sight glass on both shells to determine refrigerant level
- Refrigerant isolation valves to isolate refrigerant charge in the condenser
- ¾" thermal insulation of evaporator and suction elbow
- Dual oil filters and oil heater
- Hot-gas bypass down to 10% load
- WP-II RAM motor with 115V Space Heater tied to Optiview control panel, bearing and wiring RTD's tied to Motor Monitor and NEMA 4 terminal box, NEMA 4X control panel with hinged protective window over display panel
- 0.035" thick evaporator and condenser tubes
- ASME U-1 Report
- Meets Canadian CRN Requirement
- U.L. / cU.L. listed to US and Canadian safety standard

Package Features:

- Phase monitor and phase fail indicator light (red)
- Main power on indicator light (green)
- Master On/Off switch
- Common trouble alarm terminal
- Integrated main power wiring with Cam-Lock electrical connections and associated wiring
- Single point 460V/3PH/60HZ power application power connection for Chiller utilizing eight (8) Cam-Lock power cables (dual feed)
- Additional differential pressure safety switch for chiller protection
- Temperature and pressure gauges (Inlet & Outlet)
- Chiller provided with hydronic isolation and drain valves.
- Coated certified structural lifting skid and integrated tie-downs
- Two (2) 6" Flanged connections (Inlet & Outlet Chilled Water)
- Two (2) 6" Butterfly Valve (Inlet & Outlet Chilled Water)
- Four (4) 6" Flanged connections (Inlet & Outlet Condenser Water)
- Four (4) 6" Butterfly Valve (Inlet & Outlet Condenser Water)
- Chilled water temperature and pressure indication (Inlet & Outlet)

For more information contact:

Herc Rentals

www.hercrentals.com

1 (888) 658-1718



500 TON PORTABLE WATER COOLED CHILLER PACKAGE

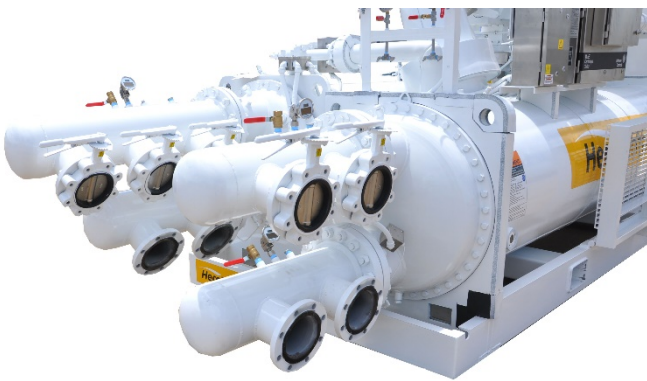
Unit Photos



Side View



Control Panel



Pipe View



Side View

Equipment specifications are based on manufacturers published data; capacity may vary based on field conditions

For more information contact:
Herc Rentals
www.hercrentals.com
1 (888) 658-1718